

GAPDH Mouse Monoclonal Antibody(2B8)

Catalog	EP0042	EP0042	Tel: 400 6610 696 Email: expandbiotech@163.com Web: http://www.expandbiotech.com/
Quantity	20μL	100μL	

For research use only.

Applications	Species Cross-Reactivity	Molecular Weight	Isotype
WB, IHC	H, R, M, Mk, Dg, Ch, Hm, Rb, Pg, Sh Insect, Yeast	37KD	IgG1

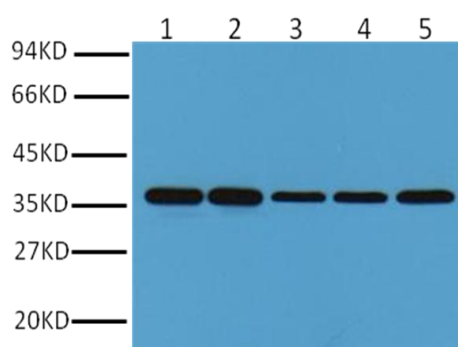
Storage Buffer & Condition: PBS, pH 7.4, containing 0.02% **sodium azide** as Preservative and 50% Glycerol.
Store at **-20°C. Do not aliquot the antibody.**

Recommended dilutions: WB: 1:5,000 IHC: 1:200

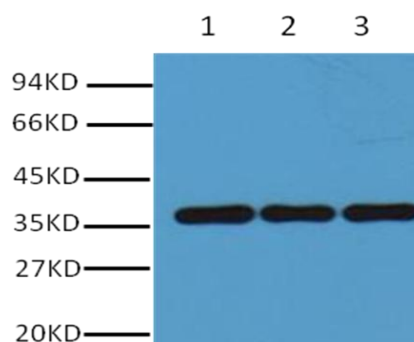
Optimal dilutions should be determined by the end user.

Specificity: Antibody can detects endogenous GAPDH protein.

Background: Glyceraldehyde 3 phosphate dehydrogenase (GAPDH) is well known as one of the key enzymes involved in glycolysis. GAPDH is constitutively expressed in almost all tissues at high levels, therefore antibodies against GAPDH are useful as loading controls for Western Blotting. Some physiological factors, such as hypoxia and diabetes, increase GAPDH expression in certain cell types.



Western blot analysis of Hela (1), Rat brain (2), Rabbit Muscle(3), Sheep Muscle(4), and Mouse brain (5) with GAPDH mouse mAb(2B8) diluted at 1:10,000.



Western blot analysis of Chicken Muscle (1), Hamster Lung (2), Pig Heart(3), with GAPDH mouse mAb(2B8) diluted at 1:10,000.