

β -actin Rabbit Polyclonal Antibody

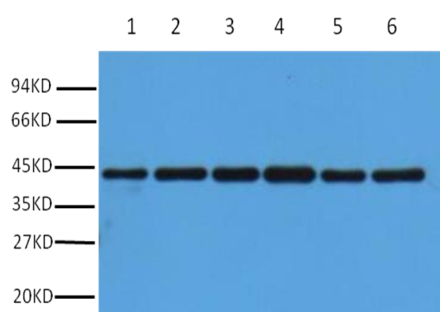
Catalog	EP0051	EP0051	Tel: 400 6610 696 Email: expandbiotech@163.com Web: http://www.expandbiotech.com/
Quantity	20 μ L	100 μ L	

For research use only.

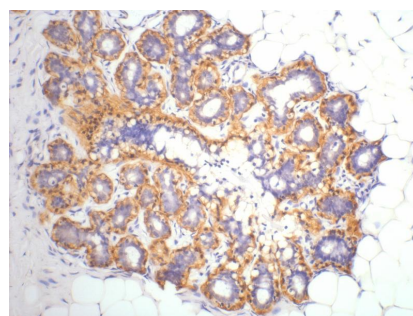
Applications	Species Cross-Reactivity	Molecular Weight	Isotype
WB, IHC, IF	H, R, M, Mk, Ch, Hm, Sh, Xenopus	43KD	IgG

Storage Buffer & Condition: PBS, pH 7.4, containing 0.02% **sodium azide** as Preservative and 50% Glycerol.Store at **-20°C. Do not aliquot the antibody.****Recommended dilutions:** WB: 1:3,000 IHC: 1:200 IF: 1:200**Optimal dilutions should be determined by the end user.****Specificity:** Antibody can detect endogenous β -actin protein.

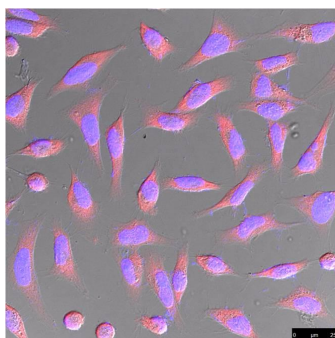
Background: β -Actin is one of six different actin isoforms that have been identified. The actin molecules found in cells of various species and tissues tend to be very similar in their immunological and physical properties. Therefore, Antibodies against β -Actin are useful as loading controls for Western Blotting. However it should be noted that levels of β -Actin may not be stable in certain cells. For example, expression of β -Actin in adipose tissue is very low and therefore β -Actin should not be used as loading control for these tissues.



Western blot analysis of HepG2 (1), Rat liver (2), Mouse kidney (3), Rabbit testis (4), Sheep lung (5), 293T (6) with β -Actin rabbit polyclonal antibody diluted at 1:5000.



IHC staining of Human ovary tissue with β -Actin PAB diluted at 1:200.



IF analysis of HeLa with EP0051 diluted at 1:500.

Applications: WB-Western blot IHC-Immunohistochemistry IF-Immunofluorescence IP-Immunoprecipitation ChIP-Chromatin Immunoprecipitation
Reactivity: H-Human R-Rat M-Mouse Mk-Monkey Dg-Dog Ch-Chicken Hm-Hamster Rb-Rabbit Sh-Sheep Pg-Pig
 公司地址: 北京市昌平区中关村生命科学园创意园 3-2-103 服务热线: 400 6610 696 邮箱: expandbiotech@163.com